

RETAIL SPACE FOR LEASE

The Cast Iron Lofts @ Soho West
300 Coles Street, Jersey City, NJ

DONOVAN
REALTY & DEVELOPMENT, INC.



Unit	Size	Rental Rate	Street Frontage	Ceiling Height
121	1,500 - 3,000 SF	\$30.00 PSF NNN	approx. 37 ft	approx. 14 ft
150	2,600 SF	\$30.00 PSF NNN	approx. 41 ft	approx. 12 ft

Highlights

- ✓ Premier location in Jersey City's hottest new neighborhood (**Soho West**)
- ✓ Close to many national retailers including **Target, Best Buy** and **CVS**
- ✓ New construction (Built in **2016**)
- ✓ 2 miles West of **New York City**
- ✓ Excellent Demographics (**1.6 million** residents and **\$149,000** AHI within 5 miles)
- ✓ Easy access to Hoboken's **Ferry Terminal** and **NJ Transit/PATH/LightRail** stations

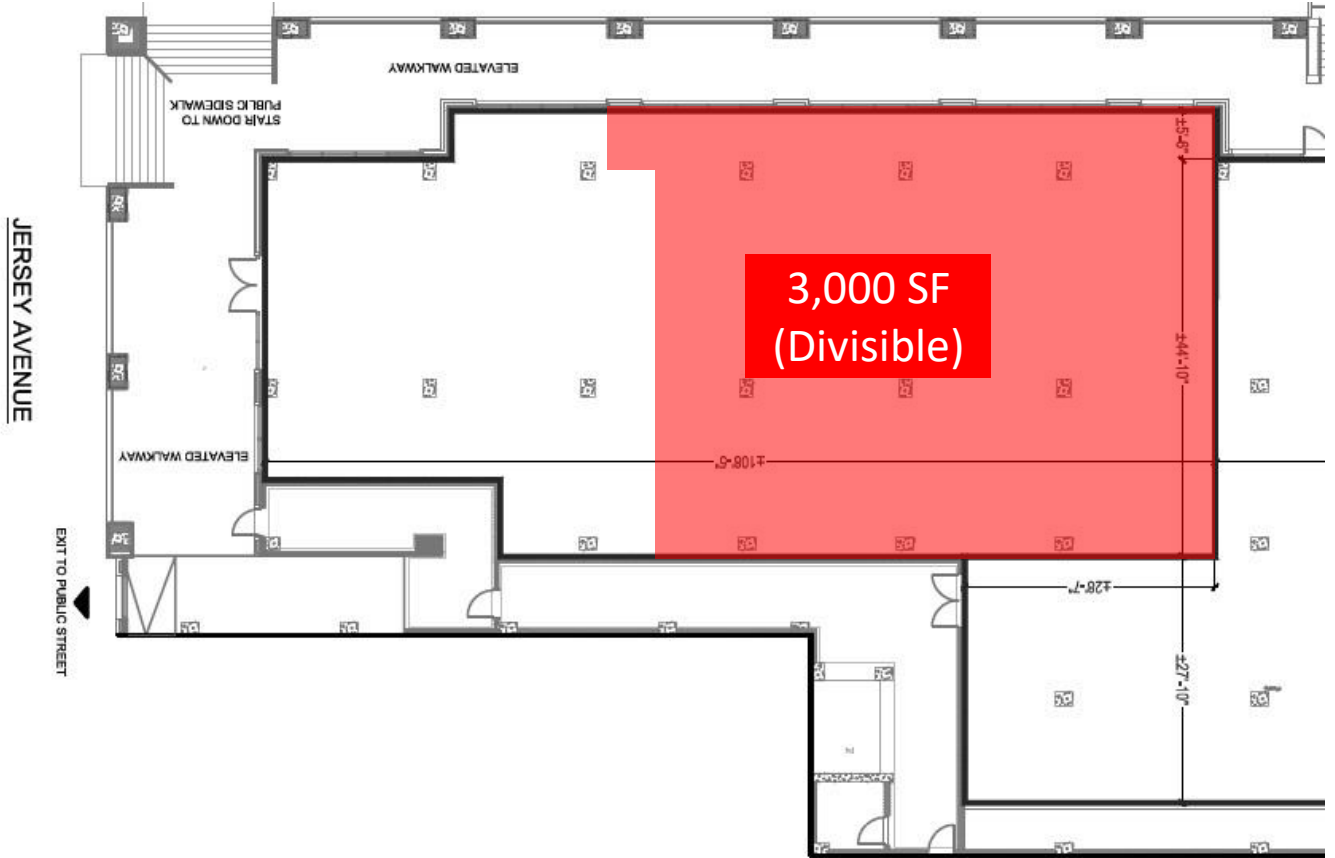
CONTACT EXCLUSIVE BROKER

Tom Donovan
tdonovan@donovanrealtygroup.com
917.796.7381

Konrad Konik
kkonik@dvncre.com
347.735.9779

Donovan Realty & Development, Inc. | 277 Grand Street, Jersey City, NJ 07302 | 201.451.5054 | Licensed Real Estate Broker
This information has been secured from sources we believe to be reliable, but we make no representations as to the accuracy of the information. References to square footage are approximate. Buyer must verify the information and bears all risk for any inaccuracies.

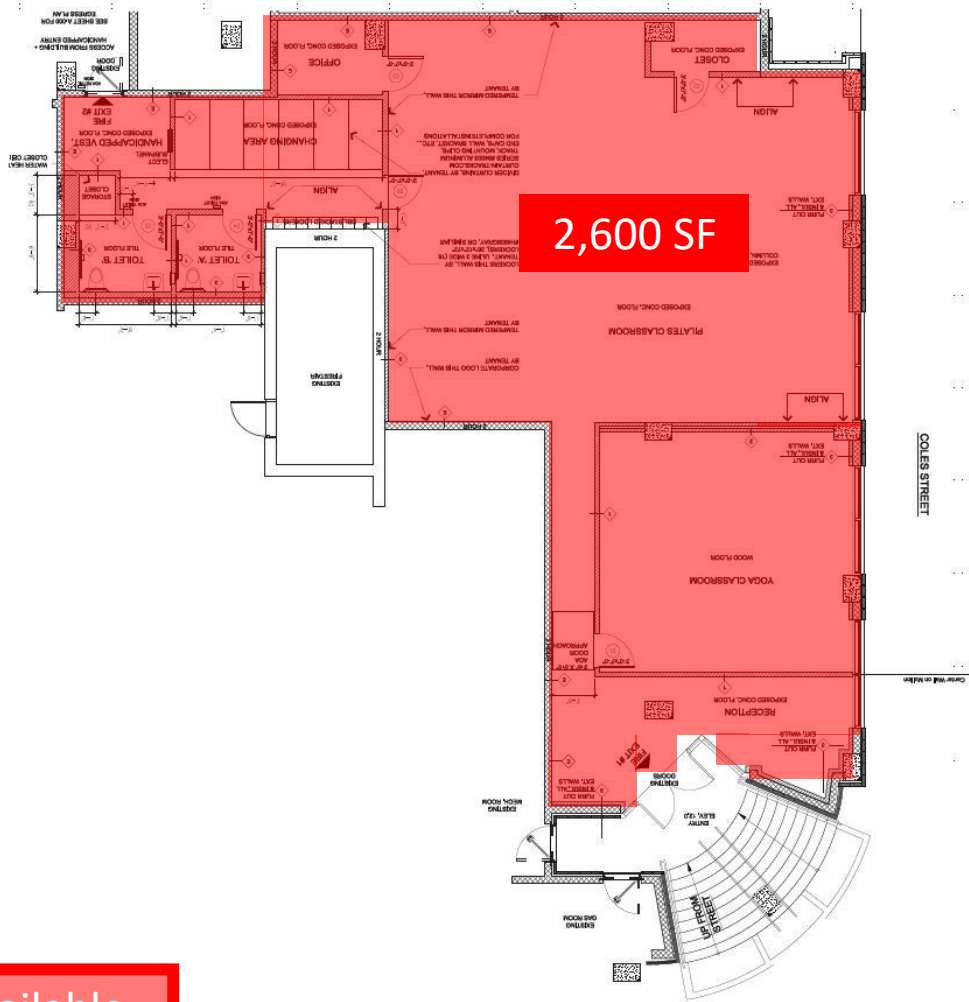
Floor Plan (Unit 121)



Available



Floor Plan (Unit 150)



Available



Surrounding Area



New York City - Manhattan
2 miles

Hoboken University
Medical Center

Jersey Social

Hudson Speed

Hoboken NJ Transit
& PATH Station

Via Quenti
School



Dexters

Metro
Market

Hoboken Ferry
Terminal

300 Coles Street



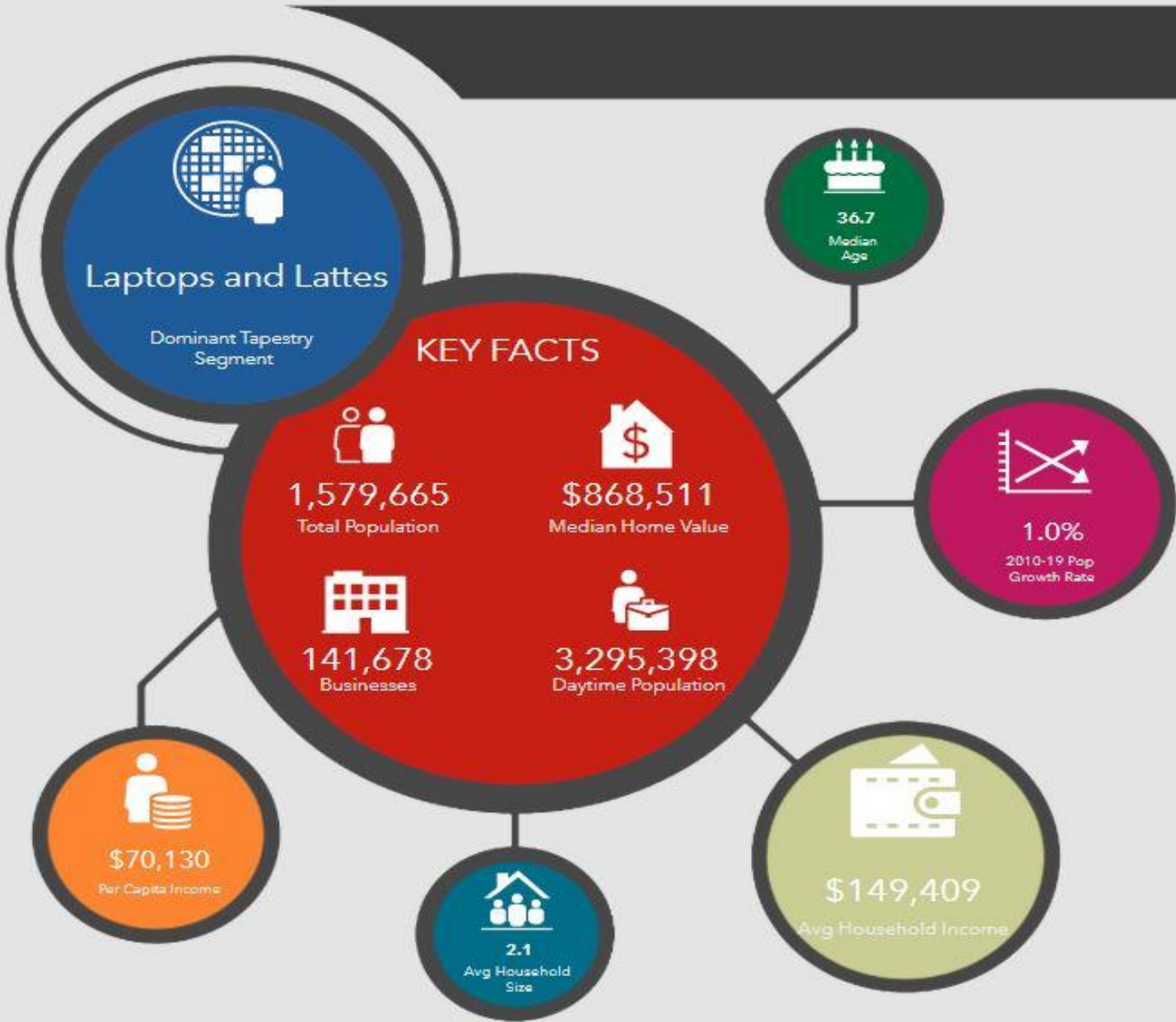
Christ Hospital



Holland Tunnel

Newport PATH
Station

Demographics & Spending Facts (5-mile Radius Profile)



KEY SPENDING FACTS

